

T.I.S.

PN 10 - Art. C068 TIS

PN 16 - Art. C067 TIS

VALVOLA DI RITEGNO A PALLA FLANGIATA PN10/16

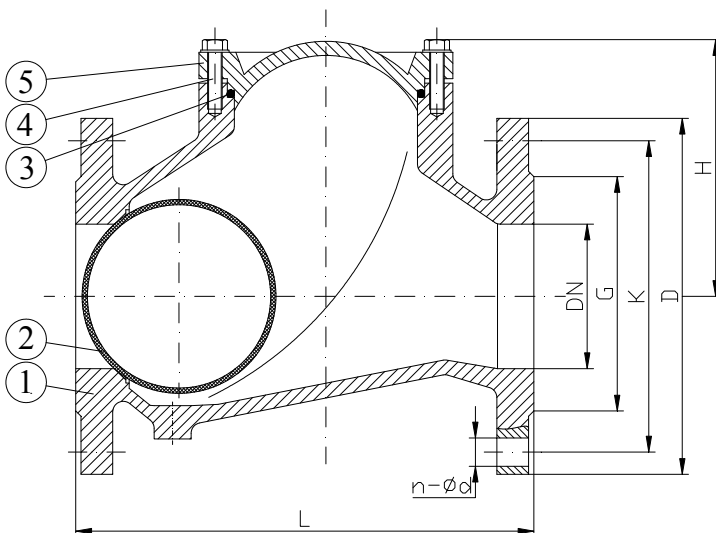
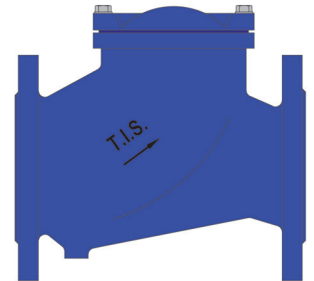
FLANGED BALL CHECK VALVE PN10/16

APPLICAZIONE:

Sistemi di pompaggio per acqua, liquidi viscosi, densi ed aggressivi.

APPLICATION:

Pumping station for clean water or viscous fluids.



NORMA PROGETTO:

EN 1074-3

SCARTAMENTO:

EN 558 Serie 48

FLANGE:

EN 1092-2

COLLAUDI:

EN 12266-1

TEMP. ESERCIZIO:

Max. +70°C

CONTROPRESSIONE:

Min. 0,3/0,5 bar

DESIGN STANDARD:

EN 1074-3

FACE TO FACE:

EN 558 Series 48

FLANGES:

EN 1092-2

TESTS:

EN 12266-1

WORKING TEMP.:

Max. +70°C

BACKPRESSURE:

Min. 0,3/0,5 bar

DENOMINAZIONE PART

MATERIALI MATERIALS

1 CORPO BODY

EN-GJS 400-15
EN-GJS 400-15

2 PALLA BALL

ALLUMINIO+NBR (DN50-150)
GHISA + NBR (DN200-DN500)
ALUMINUM+NBR (DN50-150)
D.I. + NBR (DN200-DN500)

3 COPERCHIO BONNET

EN-GJS 400-15
EN-GJS 400-15

4 VITE BOLT

ACCIAIO INOX A2
STAINLESS STEEL A2

5 GUARNIZIONE GASKET

NBR
NBR

| DN | G | K | | D | | n-ød | | L | H | W (kg) |
|-----|-----|------|------|------|------|-------|-------|------|-----|--------|
| | | PN10 | PN16 | PN10 | PN16 | PN10 | PN16 | | | |
| 50 | 99 | 125 | 125 | 165 | 165 | 4-19 | 4-19 | 200 | 106 | 7.7 |
| 65 | 118 | 145 | 145 | 185 | 185 | 4-19 | 4-19 | 240 | 129 | 11.2 |
| 80 | 132 | 160 | 160 | 200 | 200 | 8*-19 | 8-19 | 260 | 146 | 15.4 |
| 100 | 156 | 180 | 180 | 220 | 220 | 8-19 | 8-19 | 300 | 194 | 22 |
| 125 | 184 | 210 | 210 | 250 | 250 | 8-19 | 8-19 | 350 | 207 | 33 |
| 150 | 211 | 240 | 240 | 285 | 285 | 8-23 | 8-23 | 400 | 240 | 45 |
| 200 | 266 | 295 | 295 | 340 | 340 | 8-23 | 12-23 | 500 | 322 | 90 |
| 250 | 319 | 350 | 355 | 405 | 405 | 12-23 | 12-28 | 600 | 388 | 163 |
| 300 | 370 | 400 | 410 | 460 | 460 | 12-23 | 12-28 | 700 | 458 | 230 |
| 350 | 429 | 460 | 470 | 520 | 520 | 16-23 | 16-28 | 800 | 580 | 290 |
| 400 | 480 | 515 | 525 | 580 | 580 | 16-28 | 16-31 | 900 | 705 | 450 |
| 500 | 609 | 620 | 650 | 715 | 715 | 20-28 | 20-34 | 1100 | 890 | 580 |

RIVESTIMENTO ESTERNO/INTERNO: Polvere epossidica di colore blu RAL 5017 con spessore 200µm.

SURFACE PROTECTION: FBE coating process with epoxy resin powder of blue colour RAL 5017 and thickness of 200µm.

*Disponibile anche con 4 fori

*Available also with 4 holes